



features



Double wall
drawer



Full
Extension



Concealed Slides
Side Mount



Soft
Close



Push-to-Open
(Optional)

advantages

- Tool free front and gallery rail fixings come standard
- Runners and slides are concealed, giving the drawer a cleaner look
- Side adjustment is accessed from the right profile only
- Built in soft closing mechanism
- Fully synchronised soft close drawer and no knocking noise
- 2D adjustment on standard drawer (side and height)
- 3D adjustment on pot drawers (side, height and tilt adjustment through the gallery rail)

- Optimal soft closing operation
- Load capacity 40kg
- White finish
- Full extension synchronised drawer
- Tool-free assembly and removal of drawer
- Double wall drawer
- 2-dimensional front adjustment
Up/down adjustment ± 2 mm
(access from left and right profile)
Left/right adjustment ± 1.5 mm
(access from right profile only)

Nominal Length	Soft Closing				Push-to-Open
	Profile		Medium	High Pot Drawer	Profile
	83 mm	115 mm	135 mm	199 mm	83 mm
	Set A	Set A	Set B	Set D	Set A
270mm	DB1-B01S270	DB1-B02S270	DB1-B01G270	DB1-B01R270	
350mm	DB1-B01S350	DB1-B02S350	DB1-B01G350	DB1-B01R350	DB1-B51S350
400mm	DB1-B01S400	DB1-B02S400	DB1-B01G400	DB1-B01R400	DB1-B51S400
450mm	DB1-B01S450	DB1-B02S450	DB1-B01G450	DB1-B01R450	DB1-B51S450
500mm	DB1-B01S500	DB1-B02S500	DB1-B01G500	DB1-B01R500	DB1-B51S500
550mm	DB1-B01S550	DB1-B02S550	DB1-B01G550	DB1-B01R550	DB1-B51S550
600mm	DB1-B01S600	DB1-B02S600	DB1-B01G600		

Set A - Comes complete drawer with easy fix front brackets **Set B** - Set A (83mm) plus easy fix gallery rails & medium back brackets **Set D** - Set A (83mm) plus easy fix gallery rails & high back brackets.

115mm - Optional medium pot drawer will require additional 167mm back bracket and easy fix gallery rail.

*Synchronisation Rod(DB1-SYNROD) is needed for drawers with width of 600mm or wider for Push-to-Open mechanism to work.

83mm height-B01 83mm Profile

Space requirement in cabinet	Front installation dimensions	Front drilling dimension	Back installation dimensions
Inner drawer: 103.5 			

167mm height-B02 115mm Profile

Space requirement in cabinet	Front installation dimensions	Front drilling dimension	Back installation dimensions

115mm height- B02 115mm Profile

Space requirement in cabinet	Front installation dimensions	Front drilling dimension	Back installation dimensions
Inner drawer: 134 			

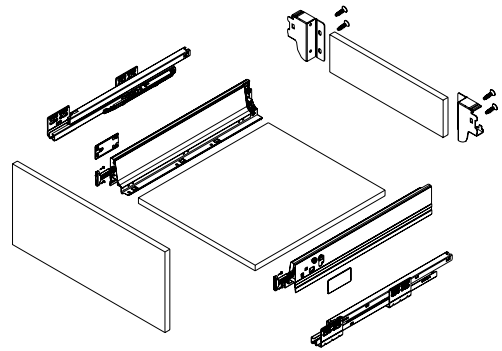
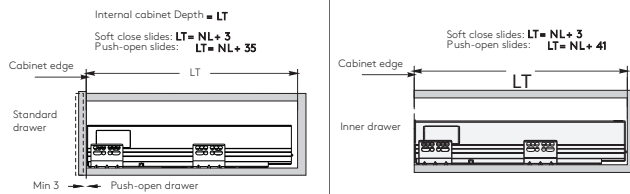
199mm height- B01 83mm Profile

Space requirement in cabinet	Front installation dimensions	Front drilling dimension	Back installation dimensions

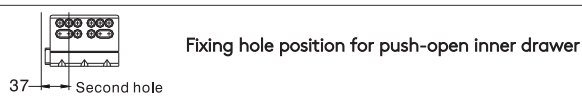
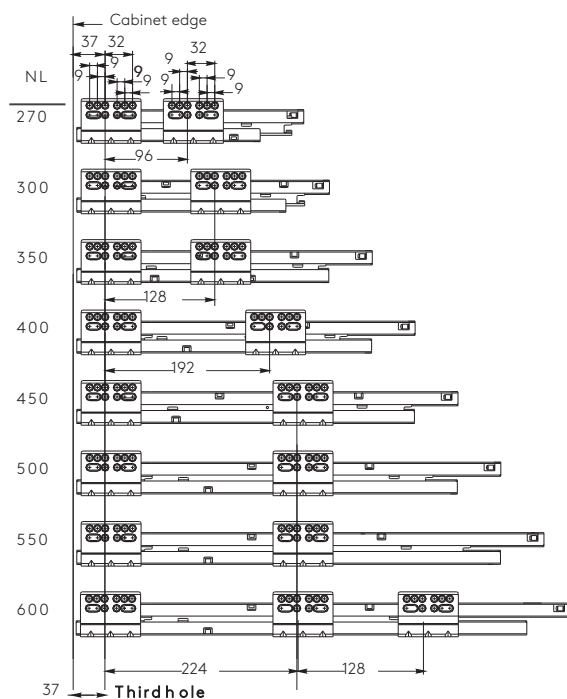
135mm height- B01 83mm Profile

Space requirement in cabinet	Front installation dimensions	Front drilling dimension	Back installation dimensions

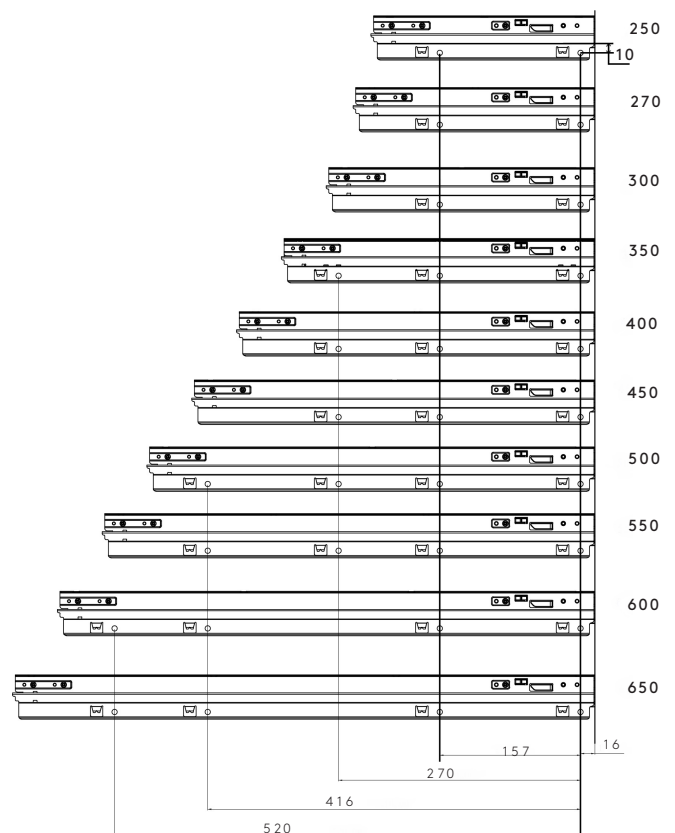
Installation dimensions



Screw position of the slides (mm)

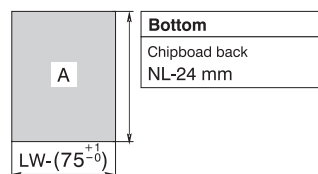
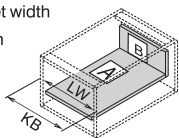


Bottom panel pre-drilling

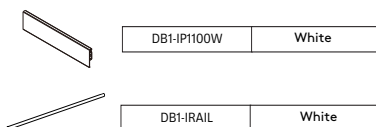


Cutting dimensions for 16mm chipboard

KB: Cabinet width
LW: Internal cabinet width
NL: Nominal length



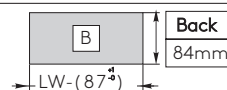
Inner panel and Inner rail cutting dimension



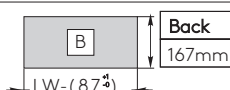
Front Panel
For cutting to size: 1100mm Cutting:
Internal cabinet width LW-97

Front Rail
For cutting to size: 1100mm
Cutting: Internal cabinet width LW-74

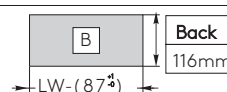
Smooth B01 Drawer- 83mm height



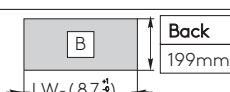
Smooth B02 Drawer- 167mm height



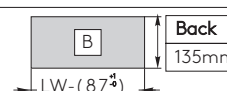
Smooth B02 Drawer- 115mm height



Smooth B01 Drawer- 199mm height

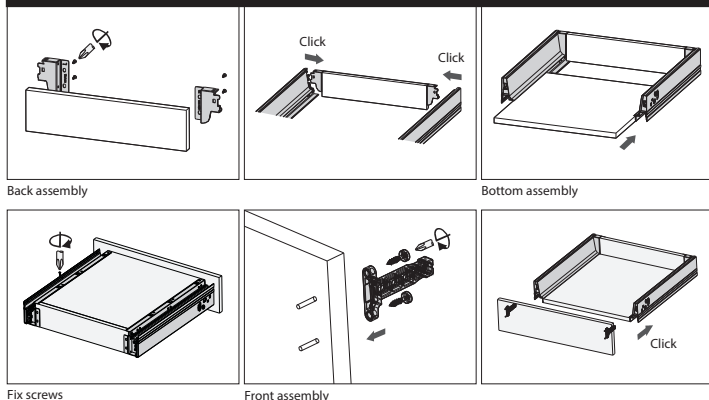


Smooth B01 Drawer- 135mm height

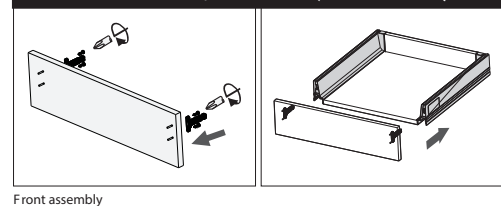


DTC INSTALLATION

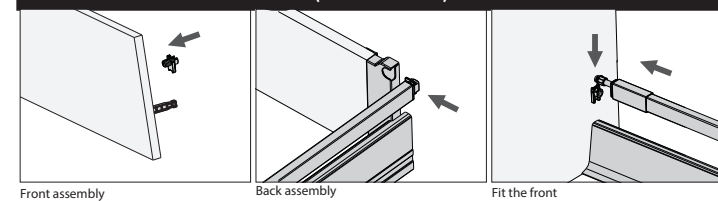
Installation Instruction



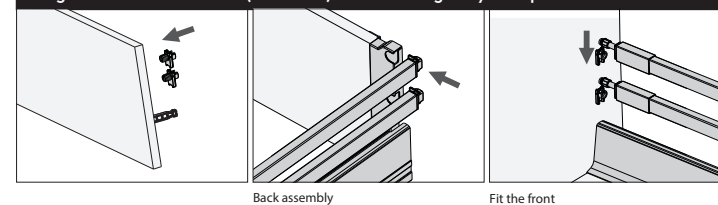
Standard Drawer- 68, 83 & 115 mm (B01 & B02 series)



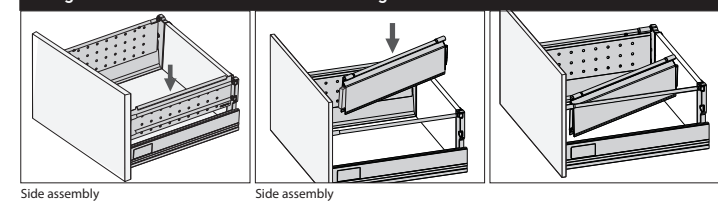
Medium Pot Drawer- 135 & 167 mm (B01 & B02 series)



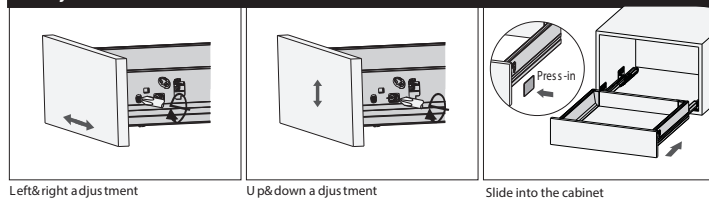
High Pot Drawer- 199 mm (B01 series) with double gallery rail option



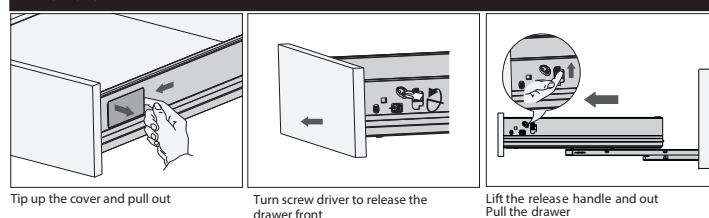
High Pot Drawer Installation with side wings



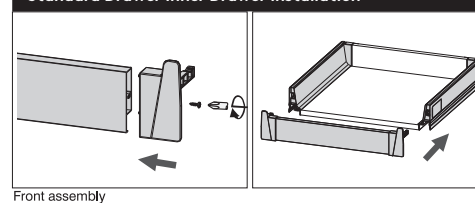
Adjustment



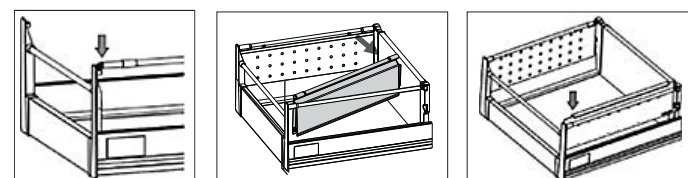
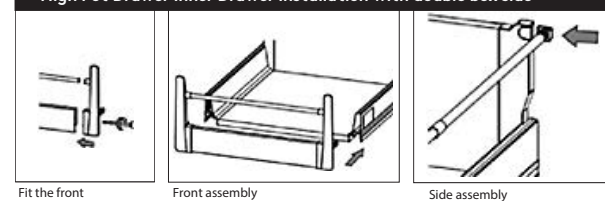
Removal



Standard Drawer Inner Drawer Installation



High Pot Drawer Inner Drawer Installation with double box side



Push to open trigger range

